

# State of Wyoming Corner Record

(In compliance with the CORNER PERPETUATION AND FILING ACT, Wyoming Statutes, 1997 Section 33-29-140, et. seq., and the Rules and Regulations of the Board of Professional Engineers and Professional Land Surveyors)

Reverse side of this form may be used if more space is needed.

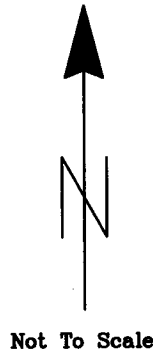
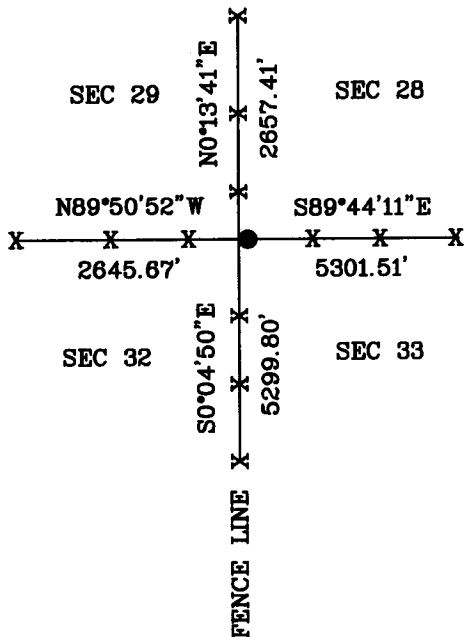
Record of original survey and citation of source of historical information (If corner is lost or obliterated), Description of corner monumentation evidence found and/or monument and accessories established to perpetuate the location of this corner. Sketch of relative location of monument, accessories and reference points with the course and distance to adjacent corner(s) (If determined in this survey). Method and rationale for re-establishment of lost or obliterated corner.

RECOVERED LOOSE 1.5'X1'X2' RED MARKED STONE, REBAR IN NORTH/SOUTH BARBED WIRE FENCE ON WEST SIDE, PUT ALUMINUM CAP ON REBAR.

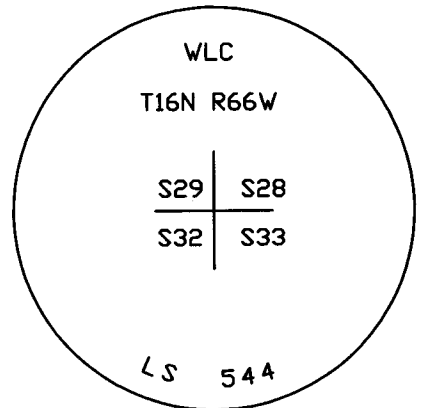
LAT = 41°19'10.821"N

LONG = 104°47'19.223"W

## Monument Location



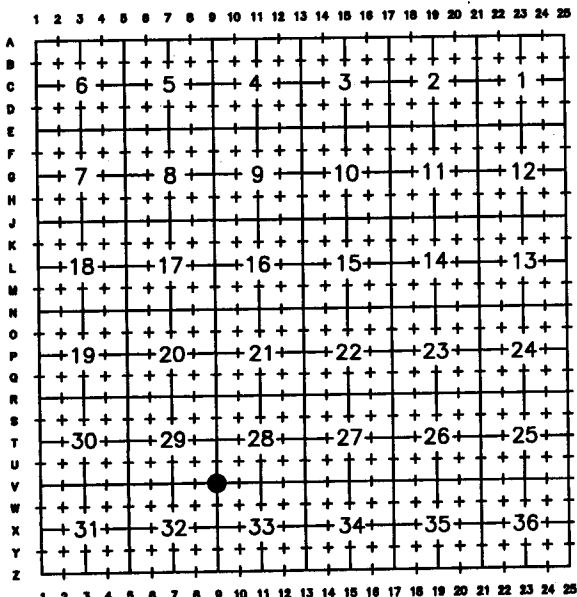
## Monument Inscription



LATITUDE AND LONGITUDE NOT REFERENCED TO CORS STATION

Date of Field Work: 10/6/2010 Office Reference: 13985

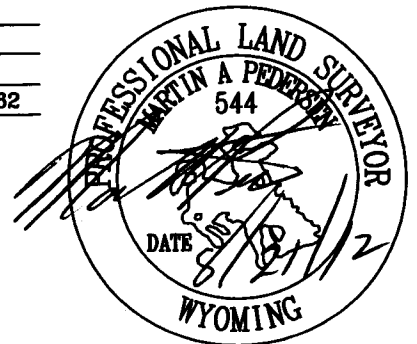
## Cross Index Diagram



Firm/Agency, Address

WLC Engineering, Surveying, & Planning  
 1015 Harshman St.  
 P.O. Box 1104  
 Rawlins, Wyoming 82301  
 Telephone Number: (307) 324-6282

This corner record was prepared by me or under my direction and supervision.



RECORDED 8/23/2012 AT 11:41 AM REC# 597438 BK# 2291 PG# 288  
 DEBRA K. LATHROP, CLERK OF LARAMIE COUNTY, WY PAGE 1 OF 1

Corner Name SW Section 28, T 16 N, R 66 W, 6th P.M. Cross-Index No.: V-9  
 County: LARAMIE, Wyoming